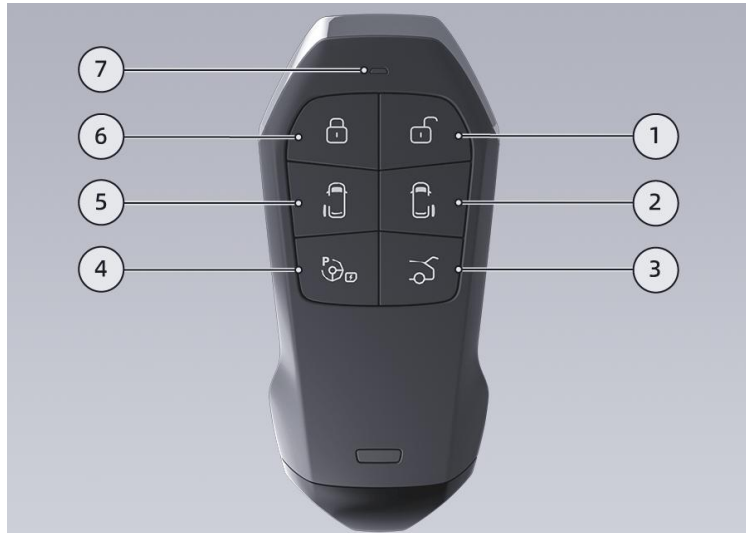


XPENG X9 User Guide

(Condensed Version)

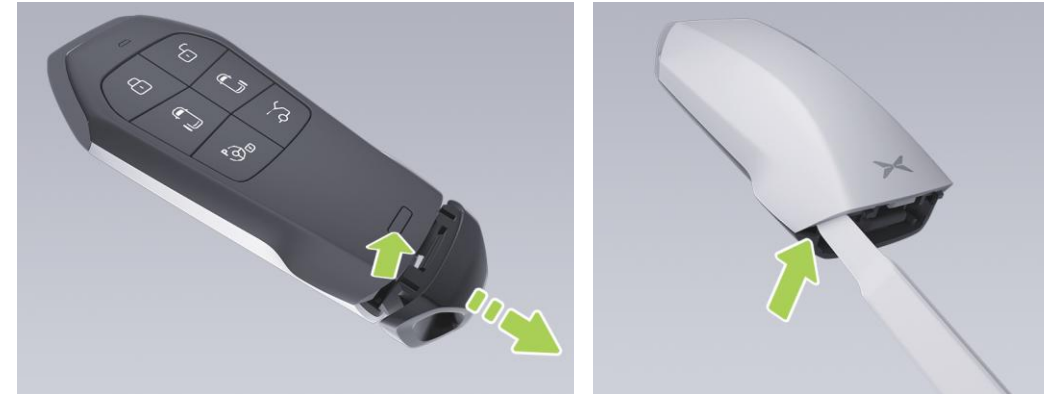
V1.1 March 2025

○ Smart remote key	3
○ Charging port	4
○ Trunk and front bonnet operation	5
○ Interior seat functionality	6
○ Doors and windows functionality	12
○ Emergency unlock	14
○ Steering wheel functionality	15
○ Rear infotainment screen	19
○ Driving assistance system	21



1. Unlock button
 - Short press to unlock
2. Right, rear sliding door open/close button
 - Press twice to open/close
3. Trunk open/close button
 - Press twice to open/close or pause its operation
4. Charging port cover opening and closing button
 - Press twice to open/close charging port
5. Left, rear sliding door open/close button
 - Press twice to open/close
6. Lock button
 - Short press to lock
7. Indicator light
 - Indicator would flash 1 time for successful connection

Replacing smart remote key battery



1. Press the unlock button and remove the trim cover.
2. Use a suitable tool to pry up the left edge and move towards centre to loosen left side
3. Repeat step (2) for right side and middle portion
4. Replace the CR2450 battery



- Charging port can be opened & closed from the Central Information Display (CID) or by pressing the charging port button twice on the Smart Remote Key.
- When vehicle is unlocked, press the upper left area of the charging port cover to open
- Remove the dust covers depending on your charging plug. Once inserted, the plug is secured
- To remove, end charging from the CID or the charging station
- Fit the dust cover and press the lock button to close

Trunk Operation



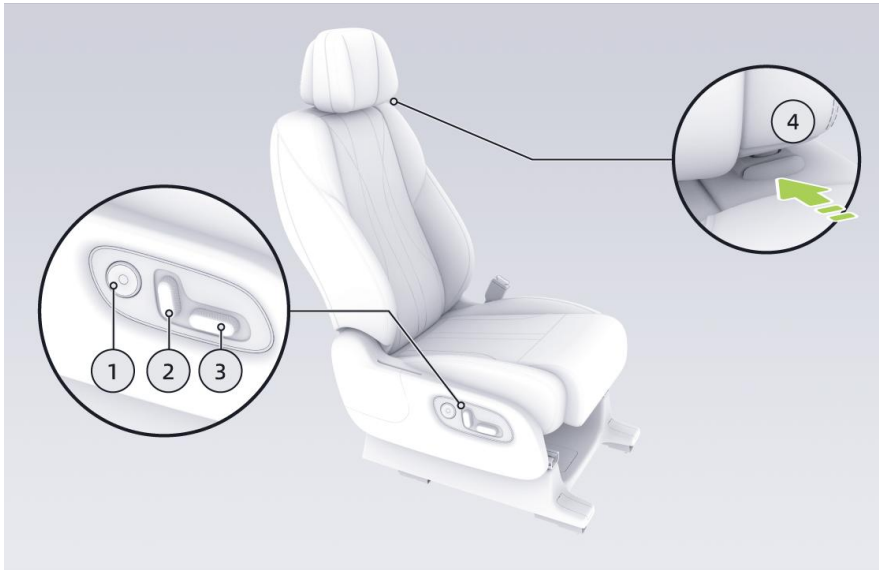
- Trunk can be opened by the Smart Remote Key or pressing the external switch above the number plate when vehicle is unlocked
- Angle can be adjusted via the Central Information Display or open to a desired angle, press and hold the trunk internal switch until an audible sound is heard to capture the memory

Front Bonnet Operation



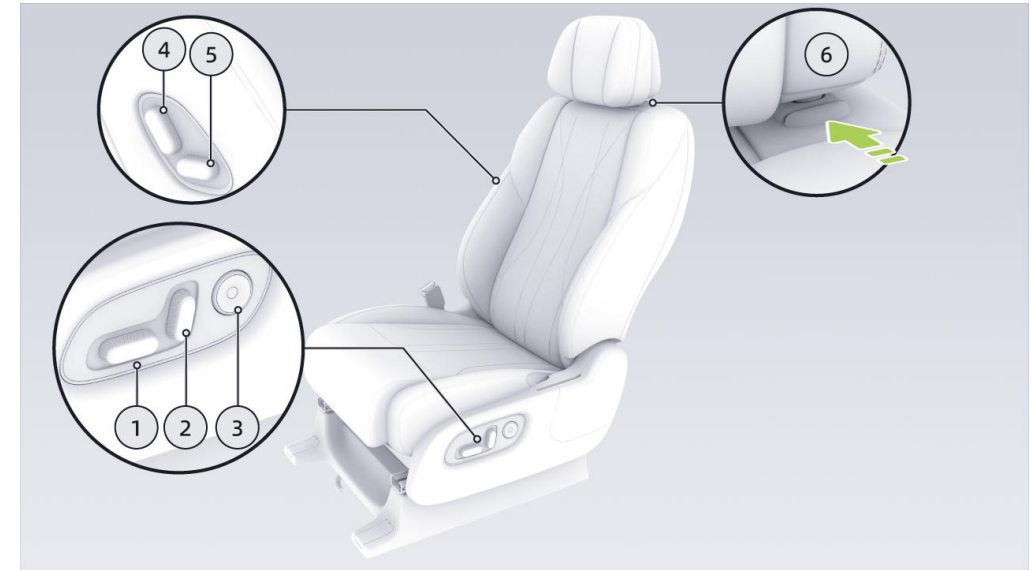
- Front bonnet latch is located on the lower, right side of driver seat
- Pull twice to unlock and release the front bonnet

Driver Seat Adjustment



1. Lumbar support adjustment
 - Adjust up/down or left/right
2. Backrest angle adjustment
 - Push the top forward/backward
3. Seat cushion adjustment
 - Forward<>backward
 - Upward<>downward
4. Headrest button
 - Press and hold the button to lower

Front Passenger Seat Adjustment



1. Seat cushion adjustment
 - Forward<>backward
 - Upward<>downward
2. Backrest angle adjustment
 - Push the top forward/backward
3. Lumbar support adjustment
 - Adjust up/down or left/right
4. Backrest angle adjustment (Driver side)
 - Push the top forward/backward
5. Seat cushion adjustment (Driver side)
 - Forward<>backward
6. Headrest button
 - Press and hold the button to lower

2nd Row Seat Adjustment (Standard Seats)



1. Lumbar support adjustment
 - Adjust up/down or left/right
2. Seat & leg support adjustment
 - Push forward/backward for horizontal adjustment
 - Push the front part forward/backward for leg support angle
3. Backrest angle adjustment
 - Push forward/backward
4. Easy Entry/Exit switch (side)*
 - Press forward to move the seat forward to facilitate entry/exit to 3rd row
 - Press backward to restore the 2nd row seats
5. Easy Entry/Exit switch (back)*
 - Press forward to move the seat forward to facilitate entry/exit to 3rd row
 - Press backward to restore the 2nd row seats
6. Headrest button
 - Press and hold the button to lower

**Driver & front passenger seat movement during Easy Entry/Exit operation is dependent on occupancy and space availability.*

2nd Row Seat Adjustment (Standard Seats)

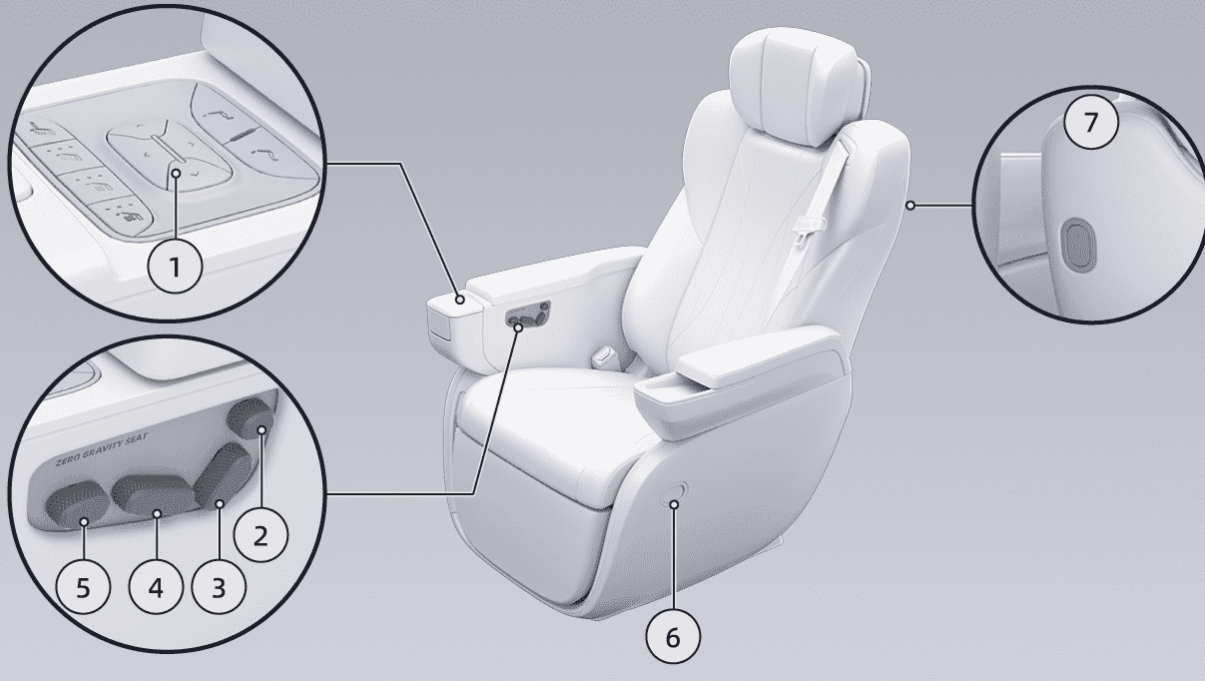


1. Massage mode
 - Toggle between 6 different massage modes
2. Massage intensity switch
 - Press to activate the seat massage mode.
 - Indicator lamp would show its intensity – 3, 2, 1, OFF



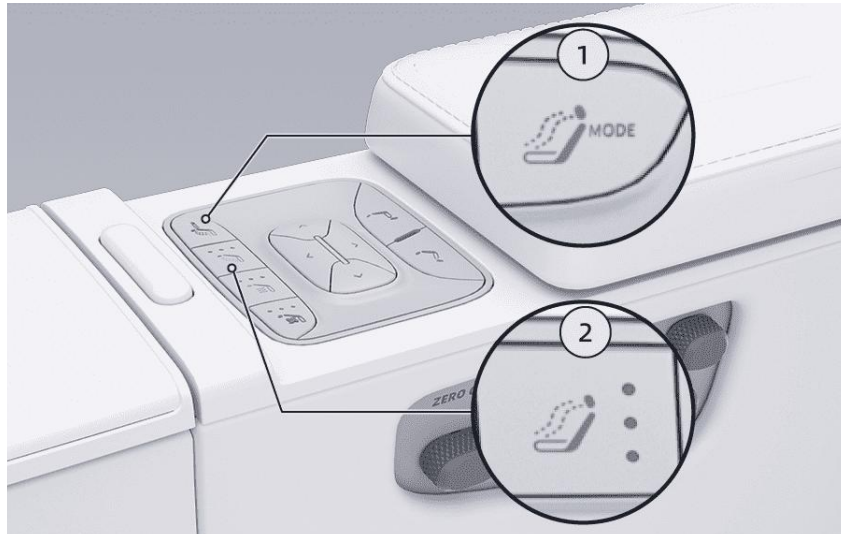
- Press the switch to activate the seat ventilation function.
- Indicator lamp show its intensity – 3, 2, 1, OFF

2nd Row Seat Adjustment (Zero Gravity Seats)



1. Lumbar support adjustment
 - Adjust up/down or left/right
2. Headrest button
 - Adjust forward/backward and upward/downward
3. Backrest angle adjustment
 - Push forward/backward
4. Seat adjustment
 - Push forward/backward for horizontal adjustment
5. Leg support adjustment
 - Adjust forward/backward and upward/downward
6. Easy Entry/Exit switch (side)*
 - Press forward to move the seat forward to facilitate entry/exit to 3rd row
 - Press backward to restore the 2nd row seats
7. Easy Entry/Exit switch (back)*
 - Press forward to move the seat forward to facilitate entry/exit to 3rd row
 - Press backward to restore the 2nd row seats

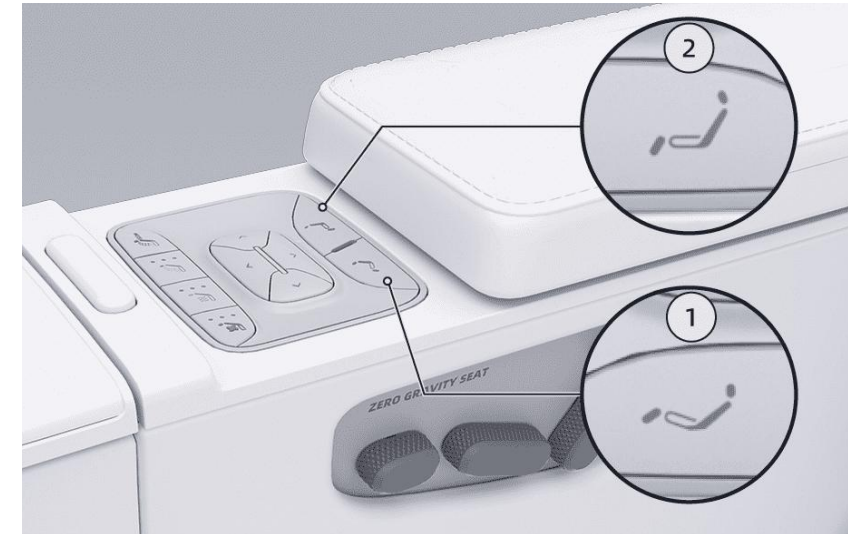
2nd Row Seat Adjustment (Zero Gravity Seats)



1. Massage mode
 - Toggle between 6 different massage modes
2. Massage intensity switch
 - Press to activate the seat massage mode.
 - Indicator lamp would show its intensity – 3, 2, 1, OFF



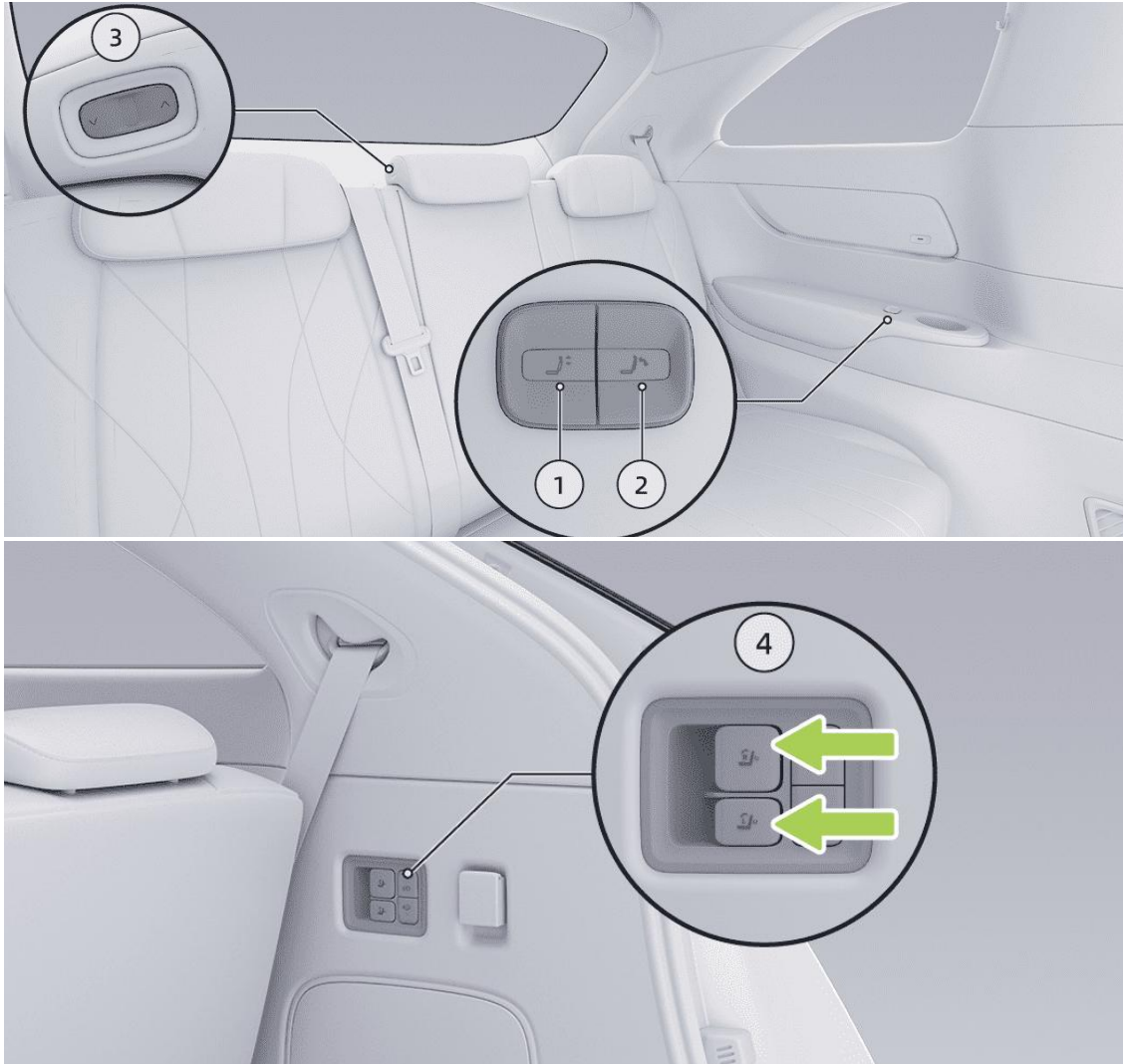
- Press the switch to activate the seat ventilation function.
- Indicator lamp show its intensity – 3, 2, 1, OFF



1. Zero Gravity switch
 - Press to activate Zero Gravity Mode
2. Reset switch
 - Restores seat to default setting

Zero Gravity mode is dependent on front seats & third row seat space availability.

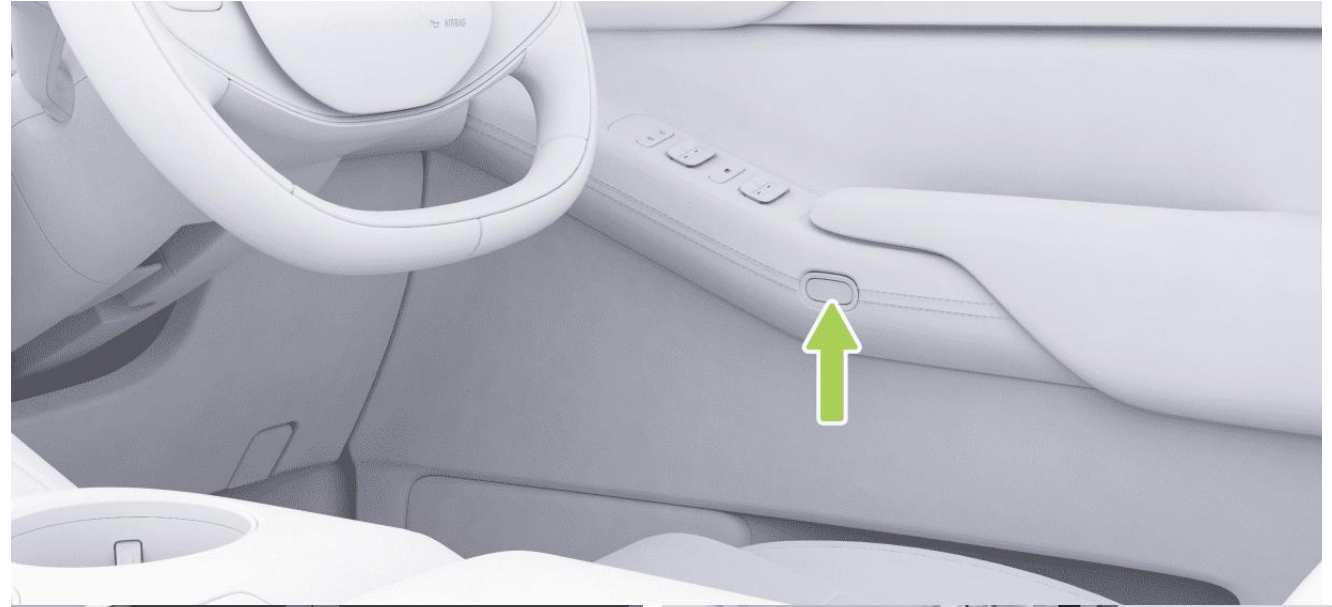
3rd Row Seat Adjustment



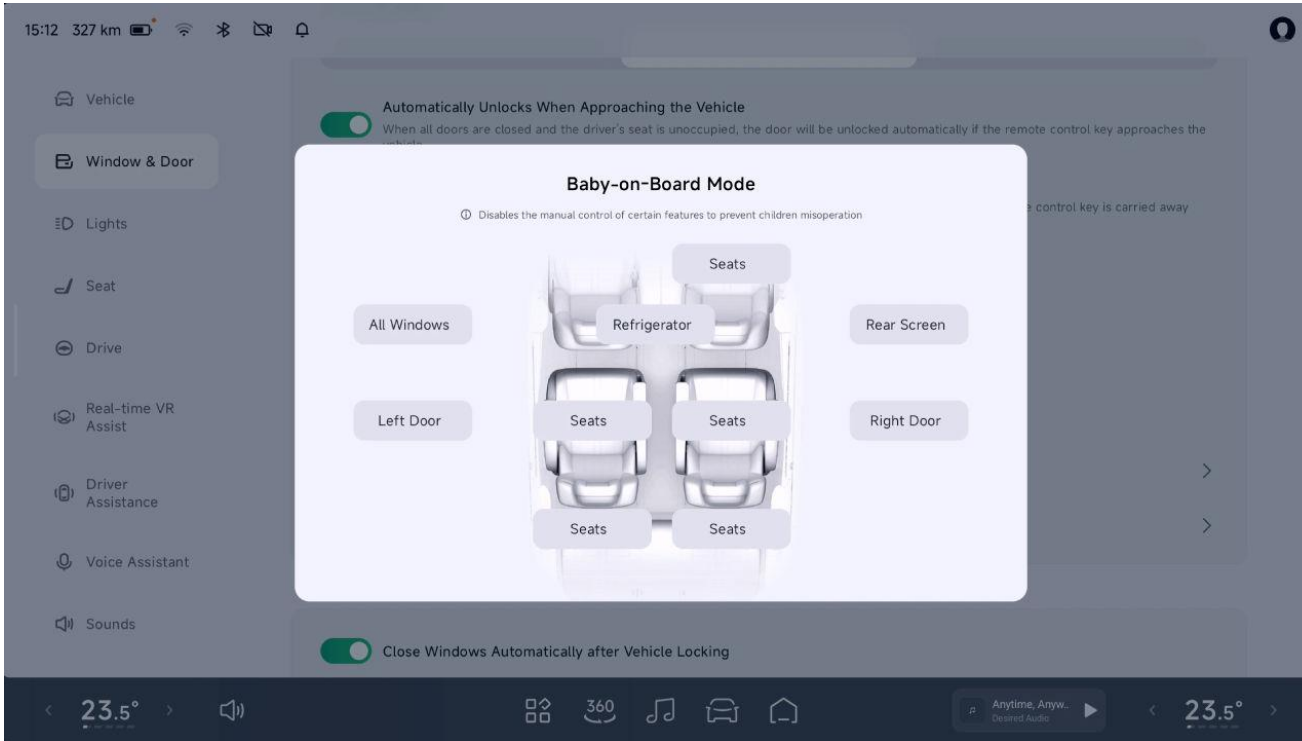
1. Left/right headrest adjustment
2. Backrest angle adjustment
3. Middle headrest adjustment
4. One-tap folding, flipping and storage switch
 - Press the left/right switch to allow the 2nd row seats to move forward, lower 3rd row headrest and fold the backrest.
 - One-tap recovery: Pull the left/right switch for a short time to restore the 3rd row backrest
 - Flipping and storage: Press and hold the left/right switch for at least 2 seconds to flip and store the 3rd row seat
 - Seat recovery: Pull up the left/right switch for at least 2 seconds to restore the 3rd row seats



- Locking and unlocking of the doors are electrically operated
- Lock switch from the driver switch locks all windows



- All doors are electronically operated
- Press to open, only when vehicle is stationary



Child safety lock can be activated through the Central Information Display.

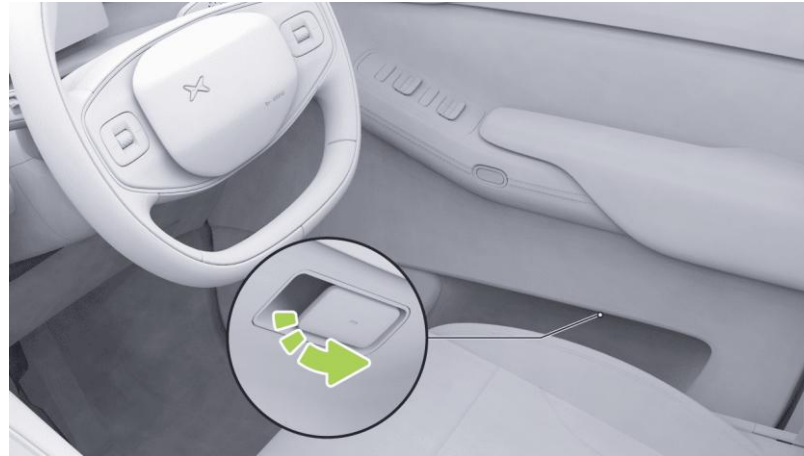
Settings → Window & Door → Baby-in-Car Mode

Various components such as windows, seats, refrigerators, rear screen and child door locks can be enabled independently.



Overhead control functionalities

- Hazard light
- SOS: Press and hold for 3 seconds to initiate emergency call. Press switch again to cancel the call.
- Emergency power-off switch: Press and hold for 5 seconds to power off



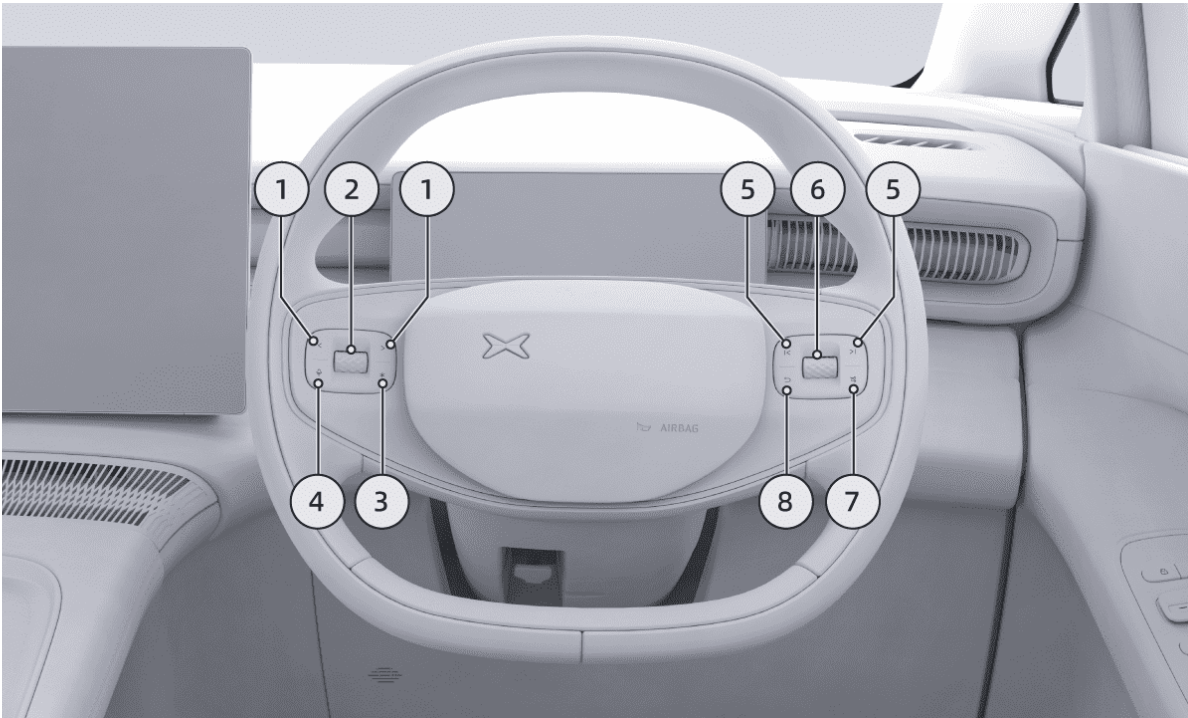
- Emergency mechanical key lock hole is behind the driver door handle
- Insert, turn counter clockwise and pull handle to open the door
- Turn the mechanical key back to original position to remove

Emergency opening of front doors

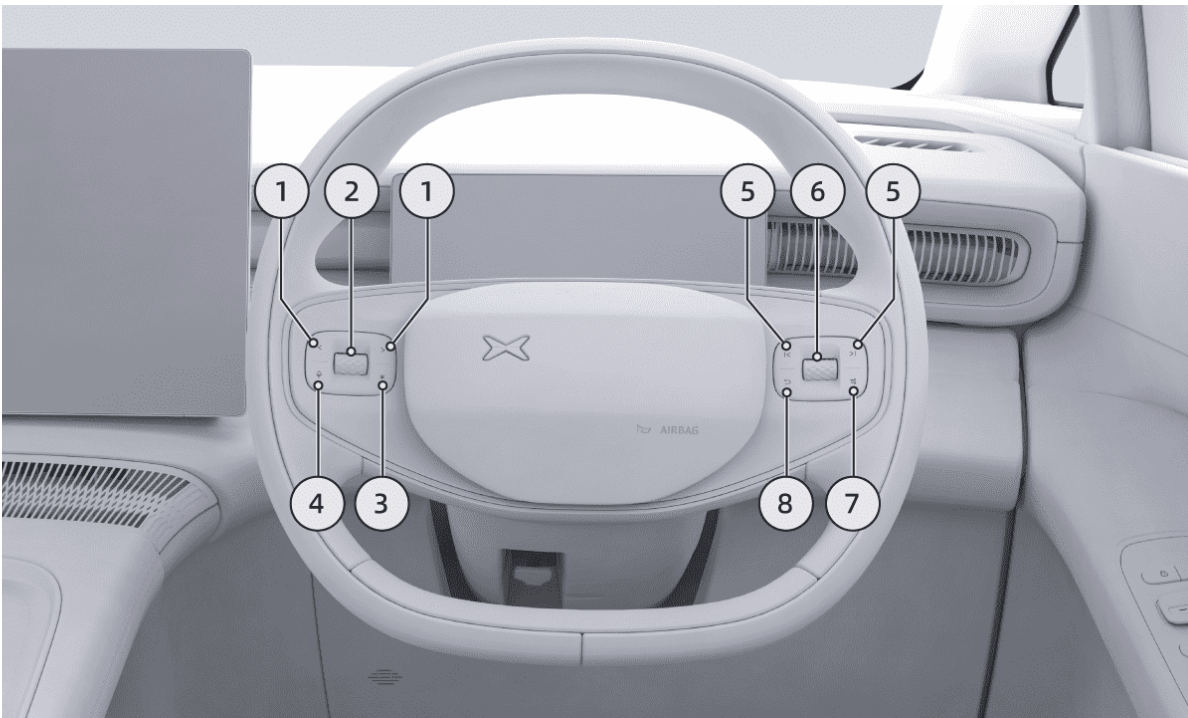
- Pull the emergency opening handle at the side of front door storage box to open the door

Emergency opening of rear doors

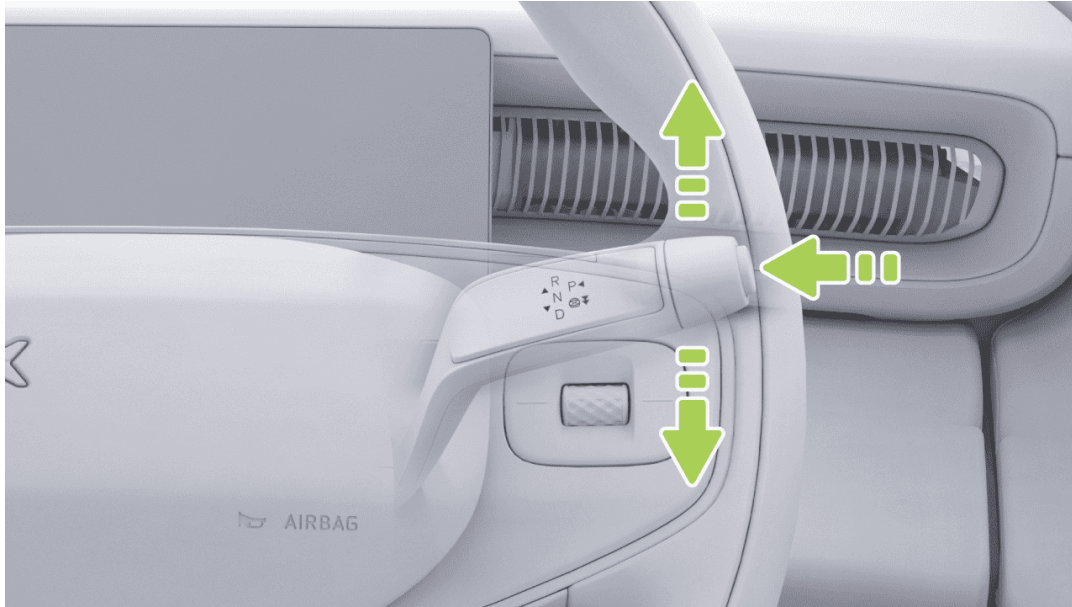
- Press open the access cover below the rear door armrest
- Pull the emergency opening handle to open the door



1. Left and right buttons:
 - Default: Adjust the A/C blower speed
 - With ACC activated, adjust the cruise distance
 - After activating the adjustment of exterior rearview mirror, control the left exterior rearview mirror to turn leftward or rightward
2. Upper and lower rollers:
 - Roll up and down to adjust the A/C temperature
 - Tap and hold it to enter the card switching mode on the left screen of the instrument panel, scroll up and down to select cards, and tap to confirm selection.
 - With ACC on, scroll up and down to increase or decrease the speed
 - After activating the adjustment of exterior rearview mirrors, roll up and down to turn over the left exterior rearview mirror

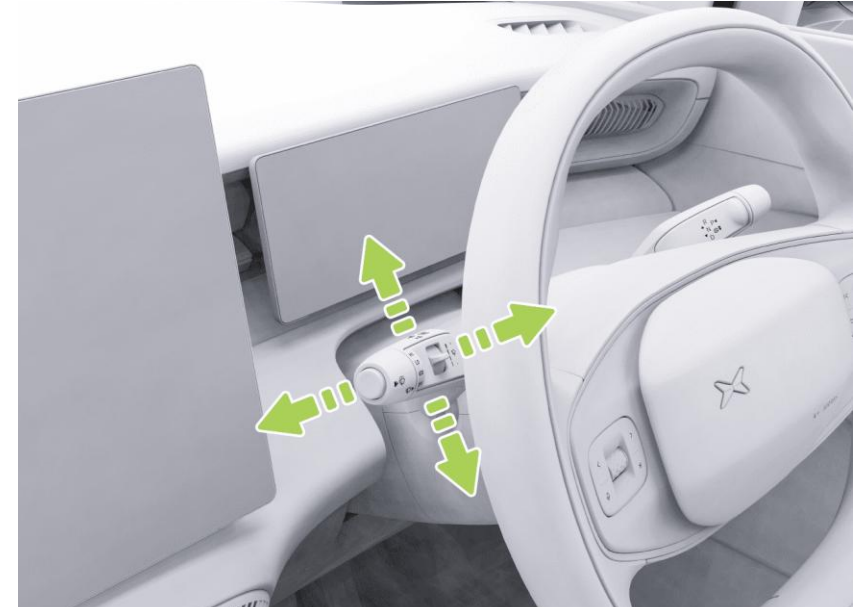


3. Steering wheel shortcut key:
 - Tap and hold this key to set the function of it, and tap it to execute the set function.
4. XPENG Voice wake-up button
5. Previous/next song button
 - After activating the adjustment of exterior rearview mirror, control the right exterior rearview mirror to turn leftward or rightward
6. Upper and lower rollers
 - Scroll up and down to adjust the media volume
 - Tap the multimedia play/pause/pop-up window to confirm.
 - Tap and hold it to enter the card selection status on the right side of the instrument cluster
 - When there is a phone call, scroll up/down to answer/reject, and tap the scroll wheel to confirm
 - During the call, tap it to hang up
 - After activating the adjustment of exterior rearview mirrors, roll up and down to turn over the right exterior rearview mirror
7. Mute button
8. Return key



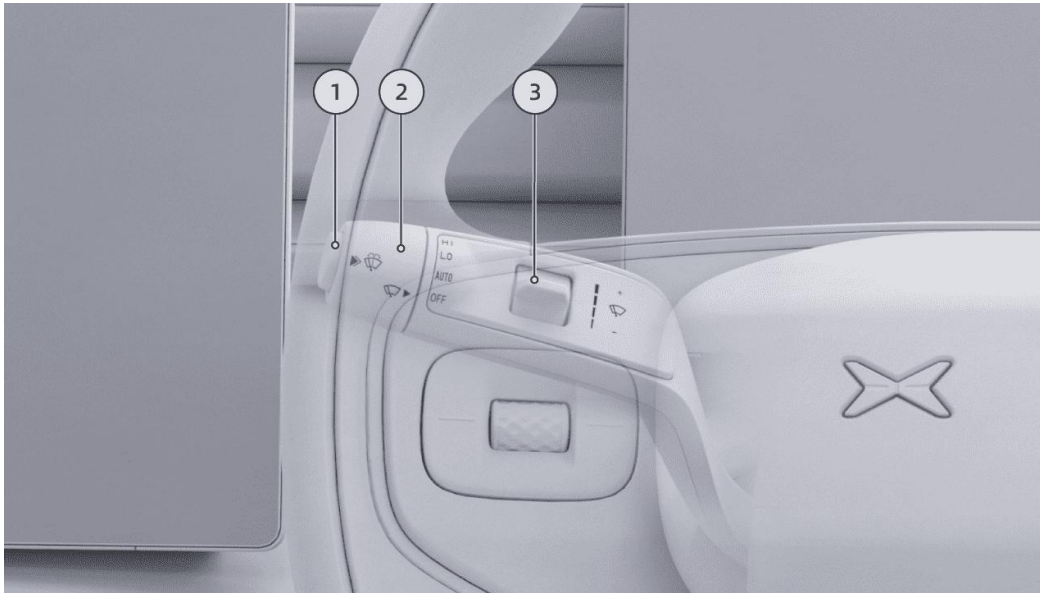
Right Gear Shift Lever

- Press the brake pedal, move the shift lever up or down, and the gear indicator will light up.
- Push down to D: Drive.
- Push up to R: Reverse.
- Press P-position switch to shift to P: Park.
- Electronic parking brake is automatically activated/deactivated when in D or P Gear



Left Light & Wiper Lever

- Push downward for left turn signal light
- Push upward for right turn signal light
- Single tap of the signal stalks would temporarily flash the signal light 3 times.
- Pull forward (towards driver) to flash high beam.
- Push backward (away from driver) to turn on high beam.



Wiper Operation

1. Washer switch
 - Press and release: Wipe once
 - Press and hold: The front washer sprays water and wipes
2. Front wiper switch
 - Off: Stop wiping
 - Auto: Wipe according to rainfall
 - LO: Low-speed wiping
 - HI: High-speed wiping
3. Wiper sensitivity switch
 - 5 settings available.



Side Mirror Adjustment

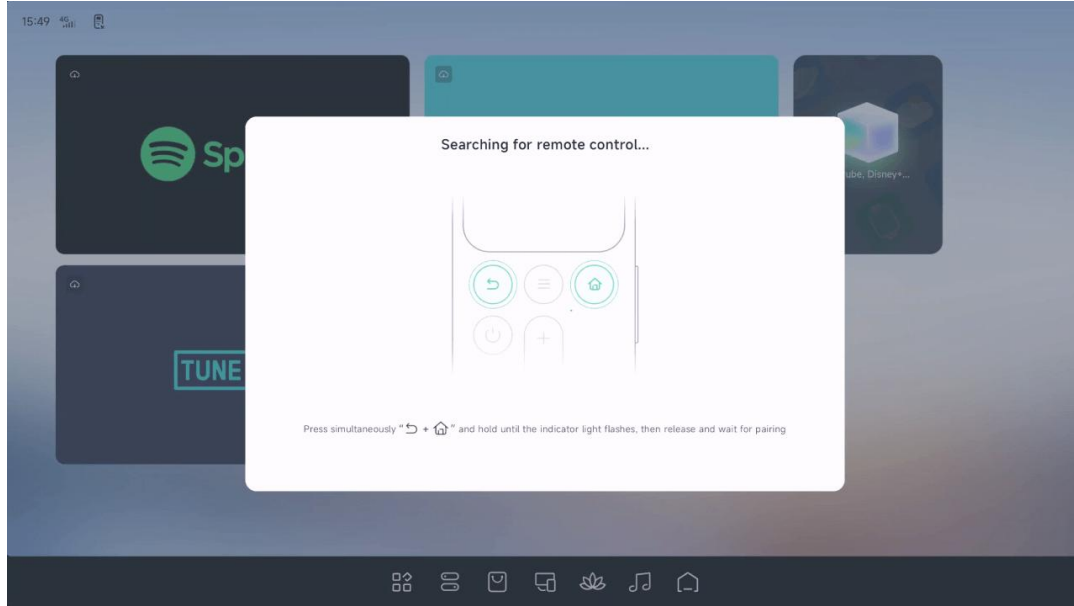
- **Settings** → **Drive** → **Exterior Side Mirrors**
- After the exterior rear view mirror is activated and the pop-up menu appears, the rollers & upper buttons on the steering wheel can adjust the respective mirrors



- Rear infotainment screen can be unfolded/folded from Central Infotainment Display, Remote Controller or from the rear passenger door panel.
- Press the switch located on the rear sliding doors to unfold/fold infotainment screen.

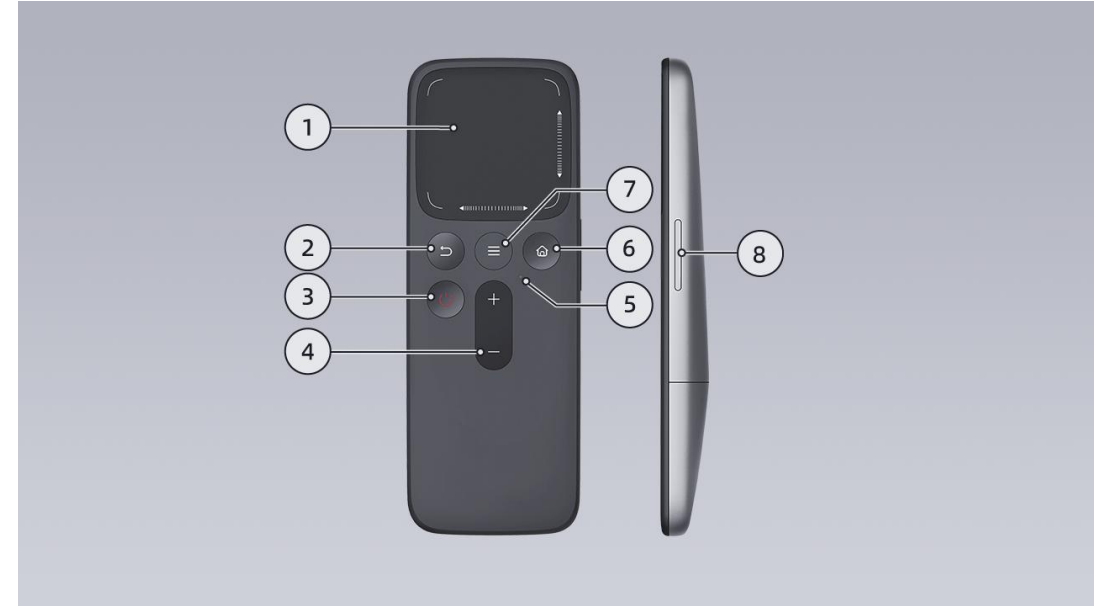


- When rear infotainment screen is unfolded, interior rearview mirror would switched to real-time 'streaming mode' to increase rear visibility.
- Press the button above the mirror to toggle between 'streaming mode' and mirror mode.
- Adjustment of the rearview mirror in 'streaming mode' can be done from **"Settings → Drive → Streaming Rearview Mirror"**

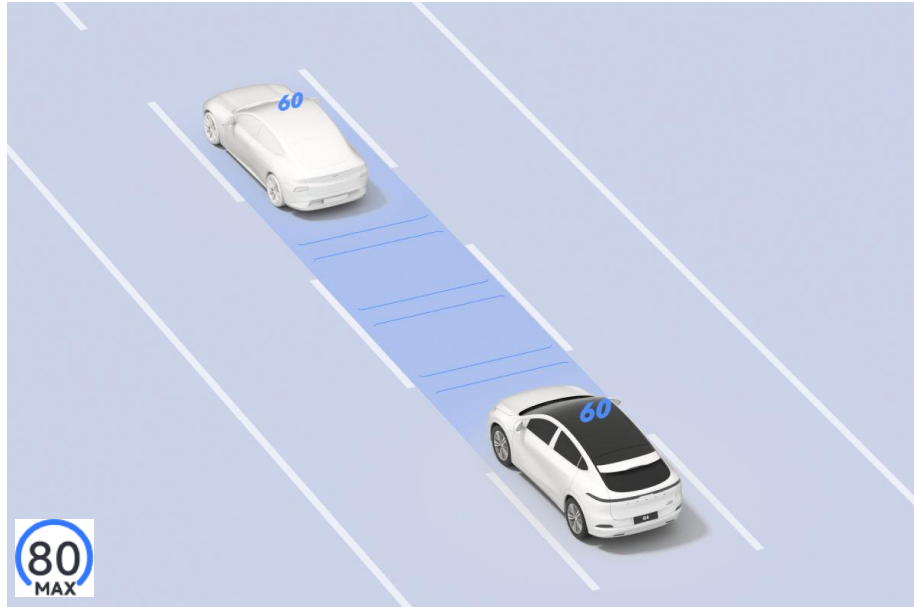


Pairing remote controller

- Tap the remote icon on status bar.
- Press and hold “Back” and “Home” buttons on the remote controller for more than 3 seconds to enter pairing mode.

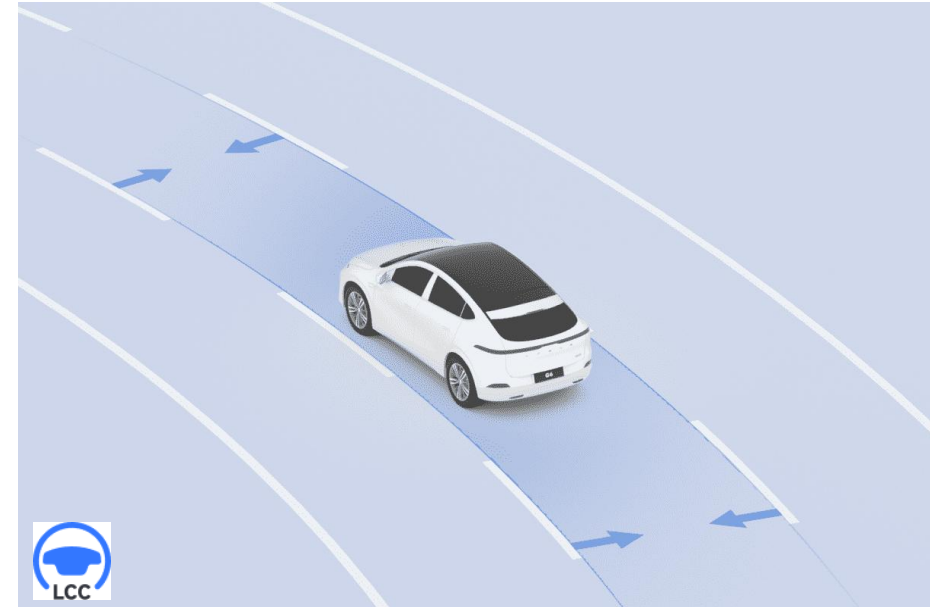


1. Touchpad
 - Tapping, sliding, or edge sliding to control cursor
2. Return key
3. On/Off button
4. Volume up/down
5. Light indicator
6. Homepage button
7. Shortcut panel
8. Screen angle adjustment



Adaptive Cruise Control (ACC)

- To activate, push the right-side gearshift lever downward to the end once.
- ACC will be displayed on the Instrument Cluster Module, with blue circle with set speed
- Use left-side steering wheel scroll to set speed, and the arrow keys to set distance with the vehicle ahead



Lane Centering Control (LCC)

- To activate, push the right-side gearshift lever downward to the end TWICE.
- LCC would be displayed on the Instrument Cluster Module with a blue steering wheel icon with LCC
- When LCC is activated, ACC simultaneously activates

To deactivate the driving assistance, depress the brake pedal or push the right-side gearshift lever UPWARDS.

Disclaimer: All driving assistance function serve as an assistance. The driver is responsible for safe driving at all times

Thank You

Useful hotlines:

24-hour XPENG Roadside Assist 6717 2111

XPENG Service Centre 6816 2221